

[ inspiring people, inspiring change ]

[www.accutone.com](http://www.accutone.com)

© 2008 Accutone Technologies Ltd. All rights reserved.

Accutone and the logo device are trademarks of Accutone Technologies Ltd.



Accutone®

## WT89 Wireless Telephone Headset

INSTALLATION GUIDE & USER MANUAL

**GAP** ETSI STANDARD  
EN 330 444  
GENERIC ACCESS PROFILE





## Introduction.

# WT89 WIRELESS TELEPHONE HEADSET

your true wireless handsfree office solution!

Accutone® is proud to introduce our first true DECT wireless headset conforming with the standard 1.88~1.9GHz requirement. The WT89 wireless headset system is full GAP compatible meaning it can be paired to any Wireless (GAP) PBx system. But aside from being a stand-alone wireless headset, the WT89 can also be paired with any fixed-line telephone by replacing its handset. Using the base station as a signal transmission base as well as a charging unit, the wireless headset gives user true mobility during phone calls. Paired with the optional automatic handset lifter users can conveniently answer and end calls away from their desks.

Designed to meet the reliability requirements of a professional business product, the WT89 is instead being marketed as an affordable product for the mass consumers as well. This is because Accutone® believes that good product knows no boundary. With long traditions of building headsets for the professional market, we not only have the experience to build the best product in terms of acoustics, mechanics and cosmetics, but also the ability to build product that is affordable to everyone. Why put everything into a headset and priced them higher when we can offer users features truly needed at a reasonable price?

So now, please spend some time to read through this entire manual to familiarize yourself with this device, and again thank you for choosing Accutone® as your telecommunication headset brand.



## DECT 1880-1900MHz WIRELESS TECHNOLOGY

\*\*\*\*\*

Generic Access Profile  
(GAP) Compatible Design

This installation guide and user manual contains the following contents:

### Part A. Knowing your WT89 Headset

Parts Included	p.3
Headset Overview	p.3
Base Station Overview	p.4

### Part B. Installing your WT89 Headset

Connecting to the Telephone	p.5
Connecting to the Base Station	p.5
Charging the Wireless Headset	p.6
Pairing the Wireless Headset with your Telephone	p.7
Adjusting Signal Amplification	p.8
Re-registering Headset with Base Unit	p.8

### Part C. Enjoying your WT89 Headset

Wearing your Wireless Headset	p.9
Making Wireless Telephone Calls	p.10
Adjusting Volume and Mute Function	p.10
Tone Adjustments	p.11
Page Function and Reception Range	p.11
Installing Handset Lifter (Optional)	p.12

### Part D. Other Information about WT89

Most Frequently Asked Questions	p.13
Technical Specifications	p.14
Specific Absorption Rate	p.14
Declaration of Conformity	p.14
Safety & Warnings	p.14

# A. KNOWING YOUR WT89 HEADSET

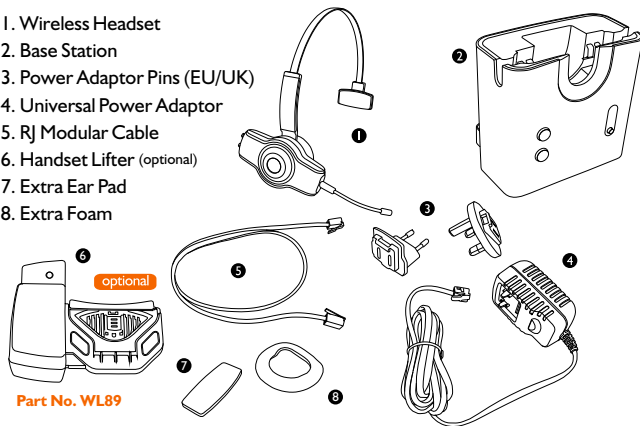
## getting started!

[inspiring people, inspiring change]

### Parts Included

The Accutone WT89 kit comes with the following:

1. Wireless Headset
2. Base Station
3. Power Adaptor Pins (EU/UK)
4. Universal Power Adaptor
5. RJ Modular Cable
6. Handset Lifter (optional)
7. Extra Ear Pad
8. Extra Foam

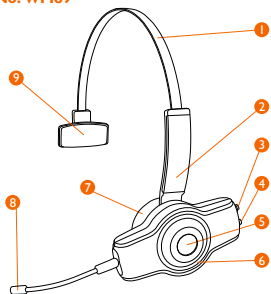


### Headset Overview

Part No. WM89

### Wireless Headset Interface:

1. Headband Extension
2. Detachable Headband
3. Speaker Volume Up Button
4. Speaker Volume Down Button or Mute Button
5. Answer / End Call Button
6. Status LED-indicator
7. Foam / Leatherette Ear Cushion
8. Microphone
9. Headrest Cushion

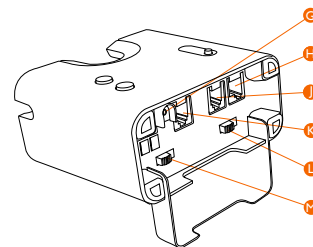


### Base Station Overview

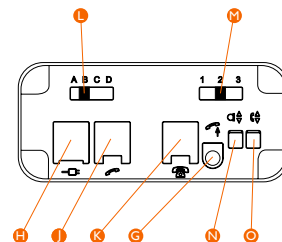
### Base Station Interface:

- A. Charging Spring
- B. Online / Paging Indicator
- C. Battery Charging Indicator
- D. Page Button
- E. Tone Increase Button
- F. Tone Decrease Button
- G. Lifter Connection Jack
- H. Power Adaptor Jack
- J. Handset Jack
- K. Telephone Jack
- L. Configuration Switch A
- M. Configuration Switch B
- N. Mic Amp Adjustment
- O. Speaker Amp Adjustment

Part No. WB89



Users should be careful when adjusting the microphone gain dial, high microphone gain may cause feedback "squealing" sound, and can damage hearing.



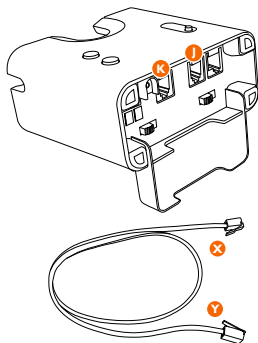
WT89 Wireless Telephone Headset  
INSTALLATION GUIDE & USER MANUAL

## B. INSTALLING YOUR WT89 HEADSET

putting everything together!

### Installation

#### B1. connecting to the telephone



Unplug the headset from your telephone base, and plug the headset into the Handset Connector (J).

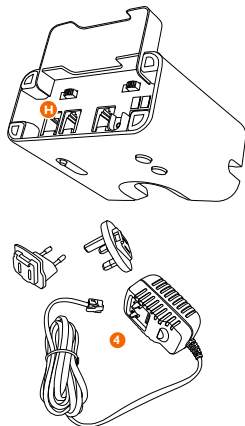
Connect one end of the RJ Modular Cable (X) to the Telephone Connector (K) under the base station, the other end of the RJ Modular Cable (Y) goes into the handset jack of your telephone unit (where it used to connect to the telephone handset).

For instructions to connect to the handset lifter, refer to P12 of this manual.

#### B2. connecting to the base station

Connect Power Adaptor (4) to the Power Adaptor Jack (H), then connect to any power-socket. (Make sure the voltage specified on the adaptor corresponds to your local electrical power supply specifications).

The Power Adaptor (4) comes with two types of pin adaptors. Select the one that fit the standard wall jack of your country, and simply install the adaptor by facing the metal pins on the power adaptor to the socket of the pin adaptor. If you are un-sure about this, consult with your local distributor for assistance.



[inspiring people, inspiring change]

### Installation

#### B3. charging the wireless headset

Place the wireless headset into the base station as illustrated. The illustration shows a right-ear wearing setup. Refer to section C1 on how to switch the headset wearing style from right-ear to left. Both setup styles can be charged by installing the headset into the base station.

Make sure the power adaptor is connected to the unit and plugged into a power source.

The battery will be **fully-charged in 2 hours**, and can operate for 5~8 hrs. The Battery Charging Indicator (D) will light up red once the headset is inserted to the base station.

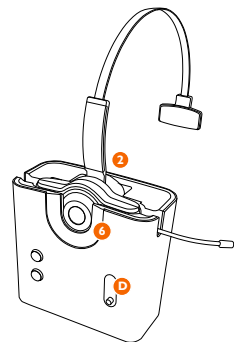
When the power runs low, user will hear a warning signal through their headset, and the Indicator (6) on the Headset will flash red as well.

Note that full battery capacity can only be achieved when the battery has been charged and re-charged 4~5 times.

WT89 employs a special-designed system which prevents the battery from being overcharged. However this also prevent users from replacing the battery themselves. If you find that the battery runs out very quickly or that it does not perform as we suggested here, please bring the unit back to your local distributor for battery replacement. A fee may be charged on the battery as well as the service provided.



To minimize risk of interference, the base unit should not be located close to other electrical equipment, in direct sunlight or near any strong heat source. It is also normal for the device to become warm during charging.



## B. INSTALLING YOUR WT89 HEADSET

putting everything together!

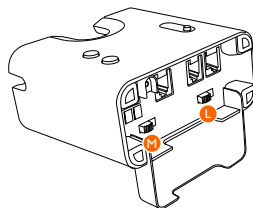
[ inspiring people, inspiring change ]

### Installation

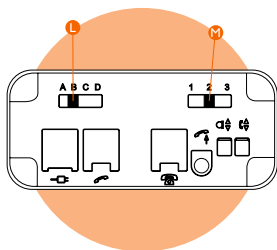
#### B4. pairing the wireless headset with your telephone

Different telephones have different settings, in some cases you will have to adjust your wireless headset to pair with your specific telephone.

To see whether your headset needs adjustment, put on your headset (after it is fully charged and properly connected), press the Answer Button (5) on your headset for the lifter to uplift the handset, or manually pick up the handset if you don't have a lifter.



If you hear a dial tone, the wireless headset works with your telephone. But if you do not hear a dial tone, pair the two by sliding the Configuration Switches (L) & (M) until you hear a dial tone.



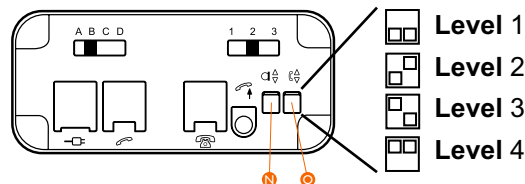
Now make a call using your telephone. If the person on the other end hears you perfectly, the pairing is completed.

If you hear the caller, but s/he cannot hear you or the volume is very low, slide the Configuration Switches (L) & (M), until you find the best setting. Note that out of the 12 possible combinations, there may be more than one optimal setting.



### Installation

#### B5. adjusting signal amplification



In some cases, the default volume for the microphone or the speaker of the telephone is not sufficient for the wireless headset. The WT89 allows extra amplification for these cases.

On the bottom of the device, you find two small switches allowing four levels of settings each for the Mic Amp Adjustment (N) and Speaker Amp Adjustment (O). Follow the illustration above, and make the adjustments corresponding the area you need to amplify. Level 4 gives the highest volume.

#### B6. re-registering headset with base unit

The WT89 headset and base unit comes pre-registered as a pair. But in case the headset loses synchronization with the base, you can re-register it by:

1. Hold down the Page Button (D) of the base unit until it flashes blue
2. Remove the headset, press the Answer Button (5) until it also flashes blue
3. Press the Tone Decrease Button (F) of the base unit 3 times
4. The indicator on the base unit flashing blue slows down
5. Press the Answer Button (5) on the headset once
6. Indicator of the base unit flashes quicker, a click sound follows
7. Click sound indicates successful pairing, press Answer Button(5) to retest

## C. ENJOYING YOUR WT89 HEADSET

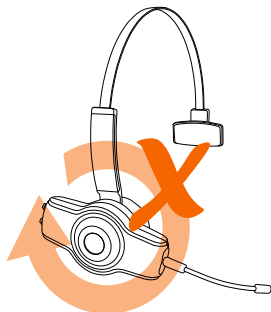
total wireless solution in action!

### Product in Action

#### C1. wearing your wireless headset

The WT89 wireless headset is designed to be worn by both left and right ear. However, users cannot just turn the headset body to shift the microphone to the other side for alternate ear wearing.

The proper way to change your headset from left-ear wearing to right-ear wearing or vice-versa must be done by removing the headset body from the headband.

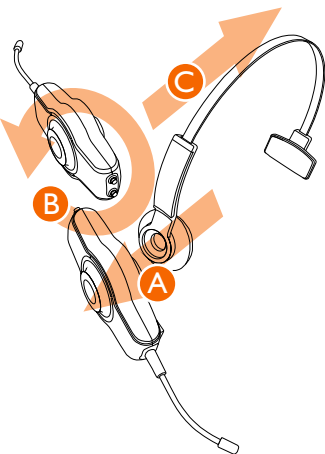


Gently remove the headband from the headset body as shown in **Step A**. The current illustration shows a right-ear wearing method.

Rotate the headset body 180° as shown in **Step B**.

Re-insert the headset body onto the headband as shown in **Step C**.

Make sure you hear a clicking sound to ensure the headset has been fastened to the headband.

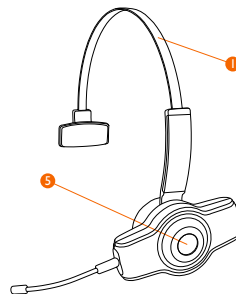


[inspiring people, inspiring change]



### Product in Action

#### C2. making wireless telephone calls



Put on your headset, adjust the Headband Extension (1) to fit your head. Press the Answer Button (5) and lift the handset of your telephone from the cradle to make a call.

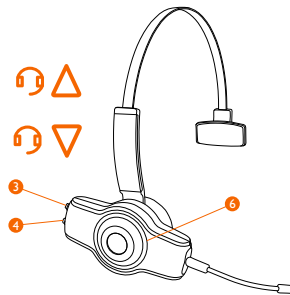
If you are using an automatic lifter, pressing the Answer Button (5) will also signal the lifter to automatically lift the handset.

Notice the Online / Paging Indicator (B) on the base unit lights up blue.

#### C3. adjusting volume and mute function

During a call, you can adjust the speaker volume by pressing the Volume Up (3) or Volume Down (4) Buttons. There are three steps of adjustments only. Each level increase or decrease is signal by a single beep sound. A double-beep sound suggests the maximum setting is reached.

To mute the microphone, press the Volume Down Button (4) for 2 sec. until you hear a beep. The indicator (6) will flash in blue slower than usual.



 **To Mute Microphone.**  
Press (4) continuously for 2 seconds.

## C. ENJOYING YOUR WT89 HEADSET

total wireless solution in action!

[inspiring people, inspiring change]

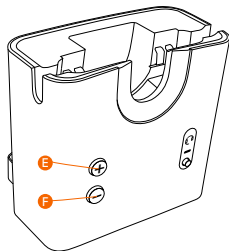
### Product in Action

#### C4. tone adjustments

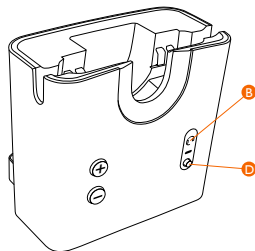
The WT89 has a unique feature which is perfect for users who have a weaker sensitivity to a particular sound pitch. When the signal is weak or the background noise is loud, these users will have a hard time hearing the caller.

The tone adjustment feature enables users to change the pitch of the sound coming out the speaker allowing them to select the tone which seems clearer or louder to them.

Press Tone Increase (E) and Decrease (F) button to test this.



#### C5. page function and reception range



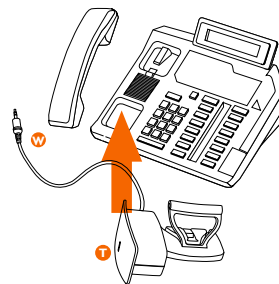
To locate the headset, press the Page Button (D), the Online / Paging Indicator (B) will light up blue, and the wireless headset will generate a low beeping sound. The Status Indicator (6) on the headset will also flash blue during paging. The paging will stop after a while or if any button is pressed on the headset of the base unit.

Depending on obstacles within an environment, the WT89 can cover a 50m radius range in any typical office settings.



### Optional Installation

#### Appendix. installing (optional) handset lifter

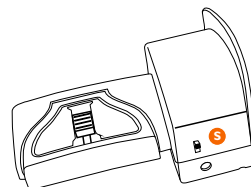
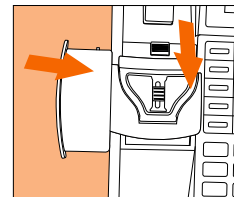


The handset lifter connects to the bottom of the WT89 base unit. When user press the online button of the headset, a signal will be sent to the base unit and subsequently to the lifter to lift the handset from its cradle.

To connect the lifter, insert the Lifter Plug (W) into the Lifter Connector (G) located at the back of the base station (the right-most jack).

There are two stickers on the bottom of the lifter, peel off the sticker-cover and stick it on top of the telephone cradle as shown on the right.

Apply light pressure as shown to make sure the lifter stays in place.



Lifting height can be adjusted by switching (S) to top for the highest uplift.

The LED Indicator (T) lights up when you press the Answer Button (5) on your headset, indicating online status.

## D. OTHER INFORMATION ABOUT WT89

why doesn't my wireless headset work!

[inspiring people, inspiring change]

### Most Frequently Asked Questions I

#### "I cannot hear any dial-tone."

Check if the modular cable is connected properly from the telephone connection jack to the handset jack of your telephone.

Do any indicators on the base station lit? If not, check if the power adaptor is connected properly, and whether the power supply is on.

With the headset docked in the base unit, do you see both red lights on the base unit as well as the headset, if the status indicator on the headset does not light up, there may be problems with the battery, please bring the device back to your local distributor for replacement.

Remove the headset from the base and press the Answer Button, does the status indicator lights up blue? If so, it means a successful connection with the base. If not, follow section B6 of this manual on re-registering the headset with the base unit.

If the indicator on the headset lights up blue but still no dial tone, try switching the Compatibility Switches on the bottom of the base station.

Did you lift up the headset when you press the Answer Button? Are you using a lifter? If not, **you will need to manually lift up the headset to get a dial tone**. If you are using a lifter, does the lifter respond when you press the Answer Button? If not, check whether the lifter is set up properly.

Maybe the output signal of your telephone of your network is too low, have you tried turning up the Speaker Amp Switches illustrated in section B4?

#### "I can hear clearly, but the caller on the other side cannot hear me at all!"

Check if you have pressed the Mute Button on the headset by pressing the Volume Down Button (4) for two seconds until you hear a beep sound.

Look at the Status Indicator on the headset when you do this, does the duration of each flash slows down or speed up after you hear the beep. If it's slower, then the current status is muted, make sure it flashes quickly to indicate normal status. For more information please refer to section C3 on volume adjustments and mute function.

Try changing the Microphone Amp Adjustment by following section B5.

Make sure the headset microphone boom is placed close enough to your mouth.



### Technical Specifications

#### General Specifications

Frequency Bandwidth	: 1880 ~ 1900MHz Bandwidth
Number of Channel	: 10 Channels
Channel Space	: 1.728MHz
Speech Coder	: 32kb/s ADPCM
Type of RF Modulation	: GMSK
Data Rate	: 1.152kpbs
Frame Rate	: 1 frame / 10ms
Sampling Rate	: 8kHz

Transmission Power Levels (RF Output Terminal Contact)	
- headset	: 20+/-2dBm
- base station	: 20+/-2dBm
Receiver Sensitivity	: >-89dBm @ BER=1000PPM
Sandby Time	: 3 days
Talk Time	: 5 hours
Battery Capacity	: 3.7 V DC/ 290mAh Li-ion Polymer

#### Specific Absorption Rate

This device meets applicable international safety requirements for exposure to radio waves. This unit measures 0.02 W/kg (measured over 10g tissue). The maximum limit according to WHO is 2W/kg (measured over 10g tissue)

#### Declaration of Conformity

Accutone hereby declares that the WT89 product conforms to the essential requirement and other relevant regulation contained in the directives 1999/5/EC(R&TTE), 2002/95/EC(ROHS), A copy of the manufacturer's declaration is available by contacting info@accutone.com

### Safety & Warnings

#### Please read the following safety instructions before using your wireless headset.

##### WARNINGS

- Operating and storage temperature is 10°C to 40°C
- Users should NOT replace any part or component of the WT89 wireless headset and base station, except for the battery pack. When replacing the rechargeable battery, only use WT89 replacement battery, and seek advice from your dealers before purchasing and installing.
- Do not open or mutilate the battery. There may be corrosive material which can cause damage to eye or skin and may be toxic if swallowed.
- Do not dispose the headset or battery in a fire. The battery cells may explode. Check local laws for disposal instructions.
- Do not use liquid cleanser or aerosol cleanser as they may damage the device or finish of the product. Use a dry cloth to clean the external portions of the product.
- Prevent the headset from coming into contact with moisture or liquid, to protect against damage to it or injury to you.
- To reduce the risk of electric shock, explosion or fire, use only the supplied power adaptor to charge the device. Ensure that the voltage rating (e.g. 230V 50Hz) corresponds to the local mains or power supply you intend to use.
- Do not disassemble the AC adaptor as this may expose you to dangerous voltages or other risks. Incorrect reassembly can cause electric shock or fire when the product is subsequently used.

##### RECYCLING

- The battery used in your headset must be recycled or disposed properly. Contact your local recycling center for proper disposal.

##### WARRANTY

- Do not remove or alter any serial number print or sticker on any part of the device, as this will automatically void the product's warranty.

WT89 Wireless Telephone Headset  
INSTALLATION GUIDE & USER MANUAL