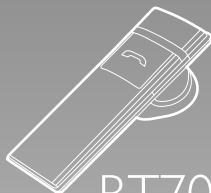




# Multipoint

pair one headset to two mobile phones



BT703



MultiPoint Bluetooth Headset

## Specifications

**Bluetooth Compliance:**

Bluetooth Version 2.1+EDR Class II

**Talk Time:**

Up to 6 hours\*

**Supported Bluetooth Profiles:**

Bluetooth Headset  
Handsfree Profiles  
Multipoint Profiles

**Standby Time:**

Up to 90 hours\*

**Battery Type:**

Recharging Lithium Polymer Battery

**Operating Range:**

Up to 30 feet (10 meters)

**Dimensions:**

57mm(L) x 17mm(W) x 6mm (H)

**Frequency:**

2.40~2.48GHz

**Weight:**

6.5 grams

\*Acutal talk-time and standby-time will vary according to phone model and usage.

**Headset Storage**

- Always turn off the Headset OFF before storing the headset for an extended period of time.
- Avoid storing the Headset in high temperature environments (above 60°C) or under direct sunlight
- Do not store the Headset in extreme humid environments.

**Correct Disposal of this Product**

(Waste Electrical & Electronics Equipment) This marking shown on the product or its literature, indicates that it should not be disposed with other household wastes at the end of its working life.

To prevent possible harm to the environment or human health from uncontrolled waste disposal, please separate this from other types of wastes and recycle it responsibly to promote the sustainable reuse of material resources. Household users should contact either the retailer where they purchased this product, or their local government office, for details of where and how they can take this item for environmentally safe recycling. Business users should contact their suppliers and check the terms and conditions of the purchase contract. This product should not be mixed with other commercial wastes for disposal.

Accutone® is a registered trademark of Accutone Technologies Limited.

Bluetooth® is a trademark owned by Bluetooth SIG, Inc.

© Copyright 2009 Accutone Technologies Limited. All rights reserved.

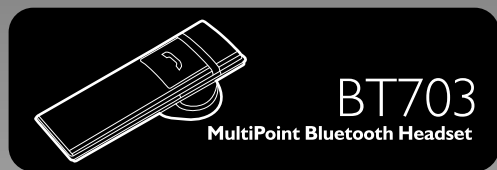
## Background

With the fast development in personal telecommunication, it has become very common nowadays for business executives as well as consumers to use more than one mobile handset. At the same time, many personal electronic devices like our notebook computers, UMPCs or PDAs comes equipped with Bluetooth Handsfree capabilities.

This is why having just one headset can sometimes be troublesome, when users find themselves constantly re-synchronizing across different devices.

The Accutone® BT703 is specially designed to solve this problem, with its Multipoint Pairing Technologies, users can have multiple devices synchronized to the headset, and enjoy quick switching across devices with the click of a button.

Once again, thank you for your purchase of the BT703, please spend a few moments to read through this setup guide, and we hope you enjoy the many benefits this product has to offer.



Bluetooth v2.1



6mm Thin



6h Talk Time



90h Standby



Weigh 6.5g

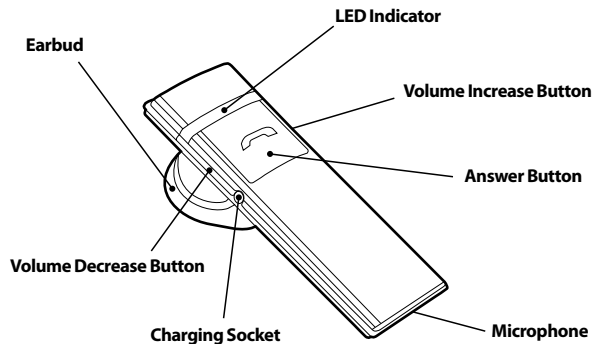
## Overview



**Driver Safety Warning!** Accutone urges users to avoid using the device during driving, unless necessary. Should users have to use the device, please make sure to follow local transportation regulations.



### Main Interface



### Other Accessories Included:

1. Earhook
2. USB Charging Cable,
3. AC/DC Power Adapter (Optional)



## B Charging the Headset



You need to charge your BT703 before using. There are two ways to charge your headset, (1) via USB cable and (2) via AC/DC Power Adaptor. The USB cable is included and the Power Adaptor is optional.

### Charging Via USB Cable

Connect your headset as illustrated above, with the small round plug going into the headset, and the USB plug going into any USB port of your desktop or notebook computer.

### Charging Via AC/DC Power Adaptor

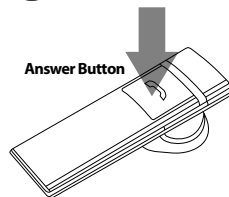
Similarly, connect your BT703 headset to the small round plug of the adaptor and the other end to any wall-jack. Depending on your region, the Voltage and the adaptor pins will be different.

The LED indicator will light up RED during charging, and BLUE when it's fully charged. It generally takes up to 2 hours for a full charger, but user should charge the headset for 4 hours during the first charge.



**Do not attempt to charge the headset with any adaptor other than the one provided, as unauthorized adaptors can severely damage the headset.**

## C Turning the Headset On/Off



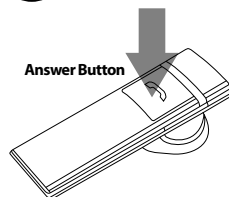
Turn **ON** the headset by pressing and holding the **Answer Button** for 4 seconds. **LED Indicator** will flash **BLUE** rapidly 3 times. This indicate the headset is now on.

Turn **OFF** the headset by pressing and holding the **Answer Button** for 3 seconds. **LED Indicator** will flash **RED** rapidly 5 times. This indicate the headset is now off.

### Low Battery Indication

If the headset continuously flashes RED when it's turned on, the headset is low on battery, please charge the headset as soon as possible.

## D Pairing the Headset



With the headset turned **OFF**, press and hold the **Answer Button** until the **LED Indicator** alternately flashes **BLUE & RED**.

Set your Bluetooth-enable mobile phone to Discovery Mode. Wait for the phone to search for "**BT703**" headset.

Confirm pairing, and you phone will ask you for a PASSKEY, enter the default PIN code of "**0000**" (4 zeros) and confirm OK.

## D Pairing the Headset

If the mobile isn't able to pair the headset within 90 seconds after entering Discovery Mode, the process will terminate automatically. User must repeat the entire pairing process again by turning the headset OFF, and then re-entering the Discovery Mode.

### Multipoint Pairing

(Connecting your headset to 2 mobile phones)

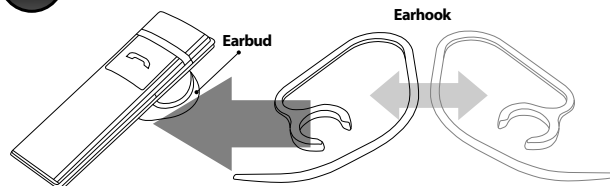
BT703 has the ability to pair with more than one device at the same time.

1. Follow the instruction on the previous page on pairing with the first mobile phone.
2. After the successful pairing with the first mobile phone.
3. Turn the headset off.
4. Repeat the same pairing procedure with a second mobile phone.
5. Go back to the first mobile phone, and select BTK703 to activate the connection.

Now, both mobile phones are connected to the same Bluetooth headset. When a call comes in from any of the two mobile phones, click the Answer Button on the headset to connect the call.

While you are on the call with one phone, the other phone's Bluetooth Headset connection will be disconnected temporarily. So if another call comes in at the same time, you can only connect to the first call.

## E Wearing the Headset



First, connect the headset to the Earhook as illustrated above. Depending on which ear you prefer to wear the headset, you can flip the Earhook over before you connect it to the headset.

Wear the headset by inserting the Earbud into your ear, and extend the Earhook to the back of your ear for a firm fit. If the size or the curve of the Earhook is not a perfect fit, gently bend the Earhook to adjust. Do not use extreme force as this can break the Earhook.

## F Making a Call

If your BT703 is properly connected to your mobile phone, make a phone call simply by dialing the number using your phone and click send or call. The BT703 will automatically connect the audio channel.

User should be able to hear the dial-tone of the phone once the call is being made.

## **G** Voice Dialing

Your mobile phone must support Voice Dialing for this feature to apply.

Shortly press the Answer Button on the Headset, you will hear the voice-activation tone through the Headset, say the name of the person you wish to call. When you have finished the call, if you wish to deactivate Voice-Dialing, simply short press the Answer Button again.

## **H** Last Number Redial

For mobile phones which do not have Voice-Dialing, or the Voice-Dialing feature deactivated from your phone, short pressing the Answer Button will initiate redial.

If the Headset is paired to more than one phone, the last number dialed from the latest-used phone will be re-dialed.

## **I** Answer & End Calls

When a call comes in, press the Answer Button on the Headset to answer. If you have already answer the call using the mobile phone instead, while you are still on the call, press and hold the Answer Button for 2 seconds to transfer the call from the phone to the Headset.

When you are finished with a call, press the Answer Button again to end it.

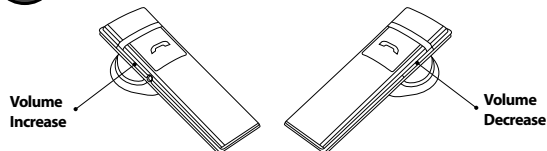
## **K** Rejecting and Transferring a Call

Users can reject an incoming call using the Headset alone. Simple press and hold the Answer Button for 2 seconds while the phone is ringing.

During a call, if you wish to transfer the call to the mobile phone or vice-versa, simply press and hold the Answer Button for 2 seconds, until you hear a switching tone\*.

\*In some mobile phone models, users can only transfer a call via the mobile phone menu.

## **L** Adjusting the Call Volume & Muting



Before or during a call, you can adjust the speaker volume of the Headset by pressing one the respective volume control button.

To mute the microphone, simply press the Volume Increase and Volume Decrease Buttons at the same time until you hear a tone. During muting, you will hear a beep-tone every 3 seconds so you know the call is on mute.

To un-mute, repeat pressing both buttons until a tone is heard.